



GMT MONTHLY MEMBERSHIP PROGRESS REPORT

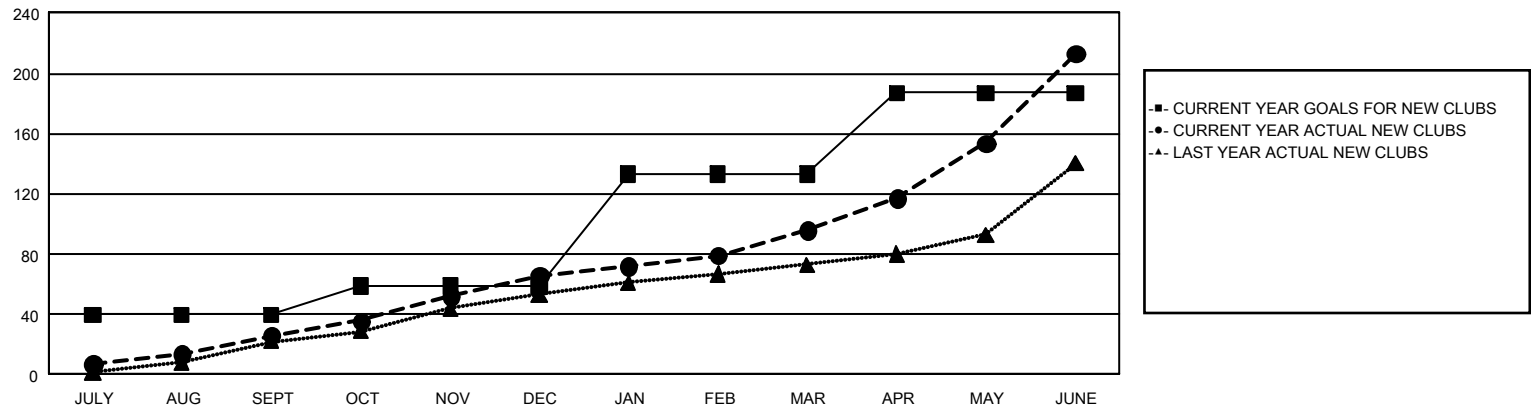
GAT Constitutional Area 3

Results as of: 6/30/2025

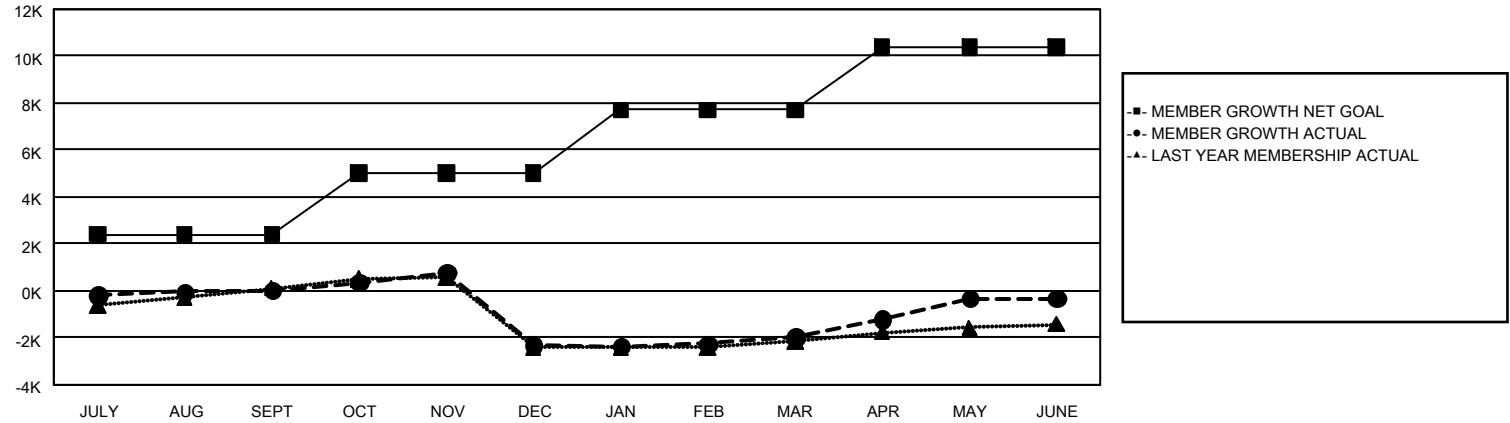
REPORT DOES NOT INCLUDE CLUBS IN UNDISTRICTED AREAS.

Clubs				Members			
RESULTS FOR 2024-2025				RESULTS FOR 2024-2025			
QUARTER	NEW CLUB GOAL	NEW CLUBS	DROPPED CLUBS	QUARTER	MEMBER GROWTH NET GOAL	MEMBER GROWTH ACTUAL	DROPPED MEMBERS ACTUAL (including transfers)
JULY/AUG/SEPT	40	26	39	JULY/AUG/SEPT	2,394	3,314	2,771
OCT/NOV/DEC	19	40	69	OCT/NOV/DEC	2,611	4,411	6,182
JAN/FEB/MAR	74	30	24	JAN/FEB/MAR	2,708	3,471	2,436
APR/MAY/JUNE	54	117	45	APR/MAY/JUNE	2,654	8,564	6,131

GOALS AND ACTUAL NEW CLUBS CUMULATIVE



GOALS AND ACTUAL MEMBERS CUMULATIVE



DROPPED CLUBS: 176		2,734 CLUBS OF 4,444 ADDED 1 OR MORE NEW MEMBERS	<u>GENDER DISTRIBUTION</u>	
			MALE	48,025 (46.09%)
			FEMALE	56,113 (53.86%)
<u>DROPPED MEMBERS</u>		CLICK HERE FOR CUMULATIVE MEMBERSHIP DATA		
DECEASED	813		TOTAL FAMILY UNIT MEMBERS 36,813	
CLUB CANCELLED	2,388			
OTHER	14,189		FAMILY MEMBERS PAYING HALF DUES 20,346	
TOTAL	17,390			